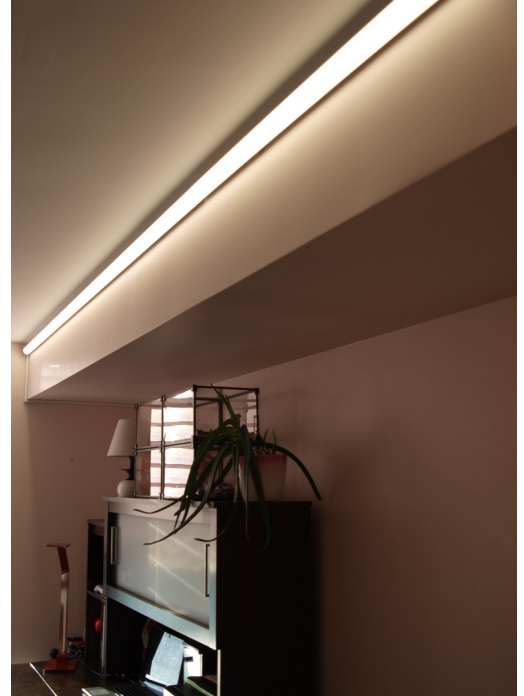


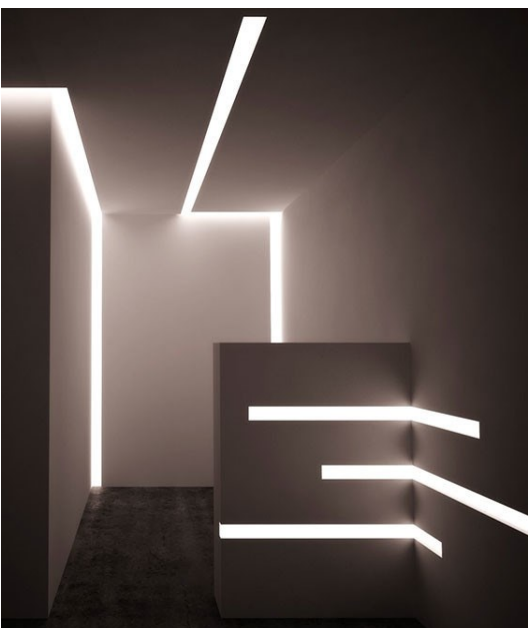
# Custom Lighting Manufacturing Specialists

We manufacture a wide range of high quality LED lighting products designed to fit a variety of applications. From **custom linear lighting** and **modular cove lighting** systems to **under-cabinet, closet and stair lighting** systems, all of our products are designed to provide a **uniform light distribution with no dark spots**. Proudly made in Canada.

## Linear Lighting



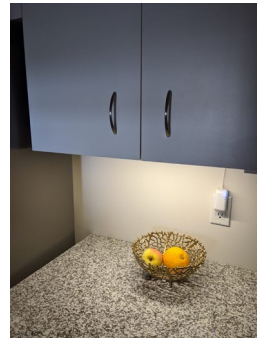
**Modern, cutting-edge, sleek.** Imagination is the limit. Custom manufactured to your exact measurements and specifications. **Perfect light distribution.** Crafted from fine and durable materials utilizing latest technology and our 3D printing capabilities.



### Key Features

- ◆ Custom built at any length and angle desired
- ◆ Light Source: dimmable LED Strip
- ◆ Uniform light distribution with no dark spots
- ◆ Light source available in 3000K (warm white), 4000K (cool white), 6000K (daylight)
- ◆ RGB (full colour spectrum) light option available
- ◆ Available in a wide range of designs and finishes
- ◆ Solid state connections eliminate the risk of oxidation over time
- ◆ Excellent heat dispersion extends life to ~50,000 hours
- ◆ Designed to meet North American woodworking standards
- ◆ All system components carry certification markings for the North American market

# Under-Cabinet Lighting

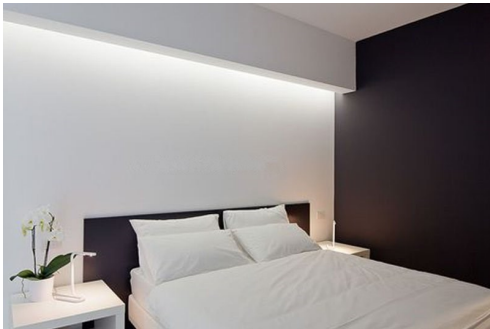


A **touchless dimmable** under-cabinet LED lighting system manufactured to your exact measurements and specifications. **Plug-and-play** for easy installation, **affordable** and with a **perfect light distribution**, it is a must-have for any kitchen or workspace.

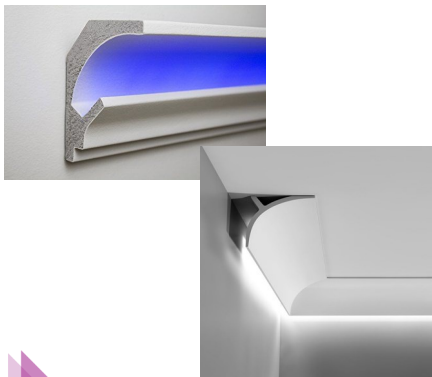
## Key Features

- ◆ Light Source: dimmable LED Strip
- ◆ Touchless dimmable controlled by motion sensor
- ◆ Surface installed, suitable for dry indoor locations only
- ◆ Plug-and-play for easy installation
- ◆ Uniform light distribution with no dark spots
- ◆ Solid state connections eliminate the risk of oxidation over time
- ◆ Designed to meet North American woodworking standards
- ◆ Light source available in 3000K (warm white), 4000K (cool white), 6000K (daylight)

# Cove Lighting



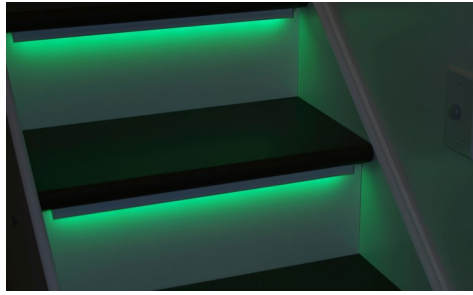
Modular **plug-and-play** LED Cove Lighting Systems designed for any in-door space where indirect lighting is desired. **No dark spots guaranteed.** Suitable for **surface installation** or **crown molding installation**.



## Key Features

- ◆ Light Source: dimmable LED Strip
- ◆ Suitable for surface installation or crown molding installation
- ◆ Modular plug-and-play system designed to significantly reduce installation time spent by contractors on site
- ◆ Light source available in 3000K (warm white) or 4000K (cool white)
- ◆ Solid state connections eliminate the risk of oxidation over time
- ◆ Professional installation recommended

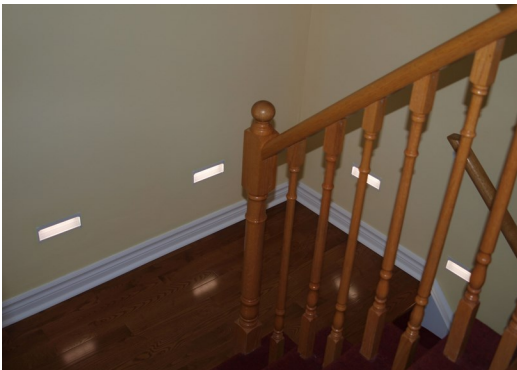
# Stairs and Hallway Lighting



**Practical** and **affordable** LED lighting designed for stairs and hallways. Every system can accommodate an unlimited number of **motion sensors** and can function independently to **increase safety** and provide a visually appealing illumination at floor level in any space.

## Key Features

- ◆ Uniform light distribution with no discomfort glare
- ◆ Dimmable (ELV)
- ◆ Fully controlled by motion sensors to avoid the unnecessary consumption of energy in the absence of human presence; can also be installed on a switch or timer switch
- ◆ Excellent heat dissipation extends life to ~50,000 hours
- ◆ Available in multiple finishes and trims
- ◆ Light source available in multiple correlated color temperatures
- ◆ All system components carry certification markings for the North American market
- ◆ Designed for indoor applications only
- ◆ Suitable for residential, office or hospitality industry settings
- ◆ Professional installation recommended



## Colour Temperature Guide



**Call us at (647) 202-9126 for a free consultation and quote!**