

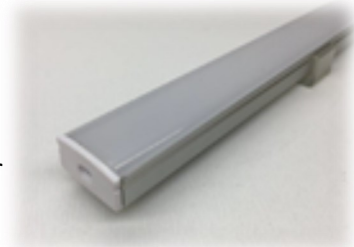


Description: A modular plug-and-play LED Cove Lighting System designed for any indoor space where indirect ambient lighting is desired. Surface-installed and built with solid state connections for increased durability, the system is guaranteed to offer no dark spots. Manufactured in Canada to your exact measurements and specifications.

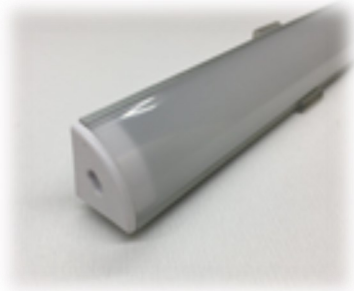
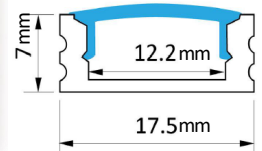
Features:

- ◆ Light Source: dimmable or non-dimmable monochromatic LED Strip
- ◆ **Modular plug-and-play** system designed to significantly reduce installation time spent by contractors on site
- ◆ **Solid state** connections eliminate the risk of oxidation over time
- ◆ Suitable for surface installation for applications like cove lighting or for any indirect lighting applications
- ◆ System consists of a mix of modules of various lengths designed cover any straight run length
- ◆ Five correlated color temperature options for the light source
- ◆ Power consumption for the light source available in two options
- ◆ All system components carry certification markings for the North American market

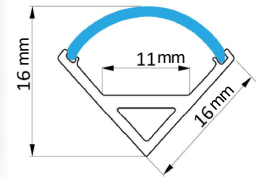
Two types of aluminum profiles to choose from



U-shape



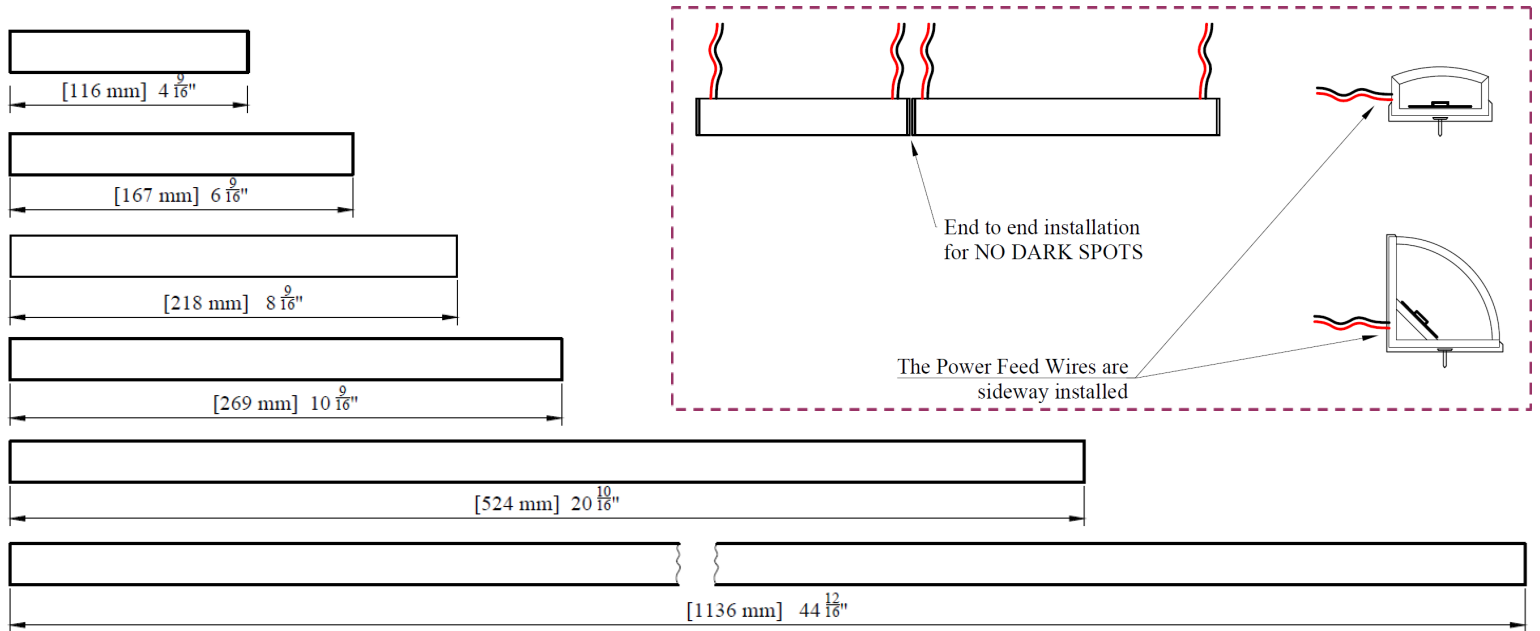
Corner-shape



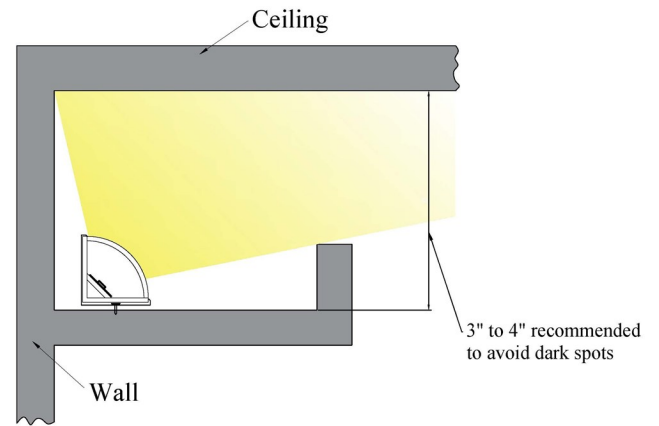
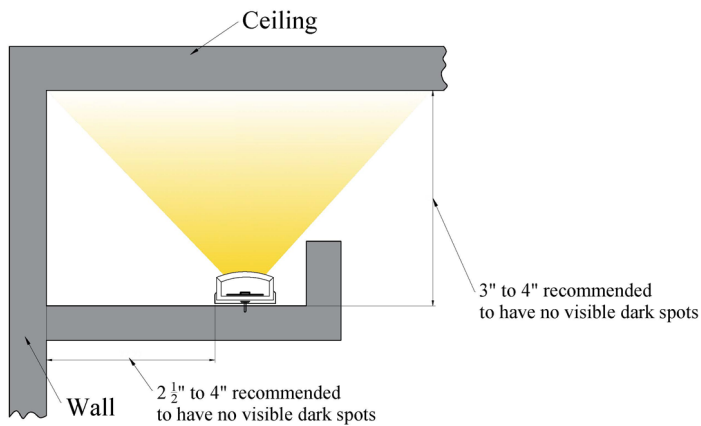
Model	Profile type	CCT	Power consumption	Dimming option
DCLM	U-shape	2700K	2.2 W/ft	Dimmable
	Corner-shape	3000K	4.5 W/ft	Non-dimmable
		4000K		
		5000K		
		6000K		

Please indicate the lengths of each straight run in the fields below:

Each cove lighting system is comprised of multiple modules that are available in different lengths:



Installation suggestions:



Note: All specification sheets are subject to change without notice. Please fill out the bottom section of the previous page and return to us by email for a free quote.